

# STAINLESS STEEL GREASE RECOVERY DEVICE (GRD) with LOW PROFILE GREASE+GARD®II

**FUNCTION:** Used in all areas where fats, oils and grease must be intercepted and collected. The unique fully automatic grease removal design permits removal of accumulated grease without having to remove the cover. Accumulated grease in liquid form is automatically skimmed off and discharged into a reservoir for convenient disposal.

**NOTES:**

1. Allow 11(280) for Fig. 8175 and 12 1/2(320) for Fig. 8176 above interceptor cover for Grease+Gard®II removal if necessary.
2. Allow 17(432) clearance above interceptor for bucket removal.
3. Dimensions shown in parentheses are in millimeters.

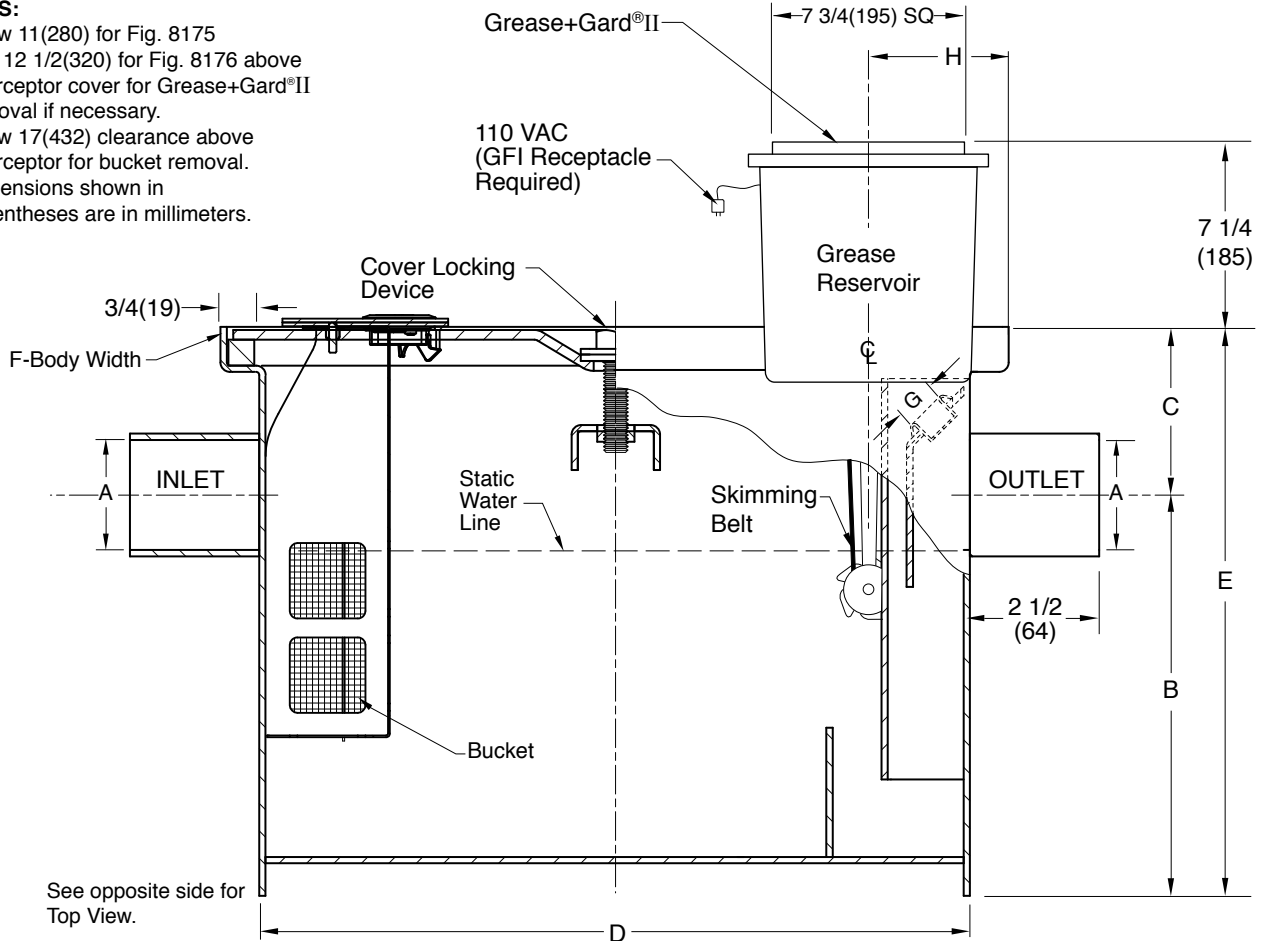


FIG. NO.	GPM FLOW RATE (L/M)	GREASE CAP LBS (KG)	A	B	C	D	E	F (WIDTH)	G (Plug Size)	H
8175-20	20(75)	40(15)	03(75)	12 1/2(318)	4 (100)	19 1/2(495)	16 1/2(419)	21(535)	1 1/2(38)	4 3/8(111)
8175-25	25(95)	50(19)	03(75)	14(356)	4 1/8(105)	21 1/8(538)	18(457)	22 1/2(572)	1 1/2(38)	4 3/8(111)
8175-35	35(132)	70(26)	03(75)	14 1/4(360)	4 1/2(115)	22 1/2(570)	18 3/4(476)	24(610)	1 1/2(38)	4 3/8(111)
8175-50	50(189)	100(37)	03(75)	14 1/4(360)	5 1/4(135)	31 3/4(805)	19 1/2(495)	24(610)	1 1/2(38)	16 5/8(442)
LOW TYPE INTERCEPTOR										
8176-20	20(75)	40(15)	03(75)	6 3/4(171)	3 1/2 (89)	39 1/2(1005)	10 1/4(260)	21 3/4(552)	1 1/2(38)	20 1/2(521)
8176-35	35(132)	70(26)	03(75)	6 3/4(171)	4 3/4 (120)	52 1/4(1325)	11 1/2(292)	27 1/2(699)	1 1/2(38)	26 3/4(679)
8176-50	50(189)	100(37)	03(75)	9 3/4(248)	6 (150)	50 1/4(1275)	15 3/4(400)	27 1/2(699)	1 1/2(38)	25 3/4(654)

**REGULARLY FURNISHED:**  
 Automatic Grease Recovery Device (GRD) with Low Profile Grease+Gard®II Skimmer with Heater and Grease Reservoir, Type 304 Stainless Steel Interceptor with Bucket, No-Hub Connections and Flow Control Fitting.

**VARIATIONS:**  
 T Threaded Inlet/Outlet  
 Extension - E [12(305) maximum height available]

**OPTIONAL MATERIALS:**  
 Duco Coated Steel -A505

DRAWING NUMBER  
**8175-8176**

SIZE  
**A**

SCALE:  
**NONE**

DATE:  
**12-12-12**

APPROVED BY:  
**CL**

CHECKED BY:  
**CL**

DRAWN BY:  
**TBW**

**8175-8176**

FIGURE NUMBER

DIMENSIONS ARE SUBJECT TO MANUFACTURERS TOLERANCE AND CHANGE WITHOUT NOTICE

REV.	DATE	DESCRIPTION	BY	CKD. BY

WEIGHT POUNDS	VOLUME CUBIC FEET

**FIGURE NUMBER**  
**8175-8176**  
**SERIES**

# STAINLESS STEEL GREASE RECOVERY DEVICE (GRD) with LOW PROFILE GREASE+GARD® II

DRAWING NUMBER  
**S8175-8176BS**

SIZE  
**A**

SCALE:  
**NONE**

DATE:  
**12-12-12**

APPROVED BY:  
**CL**

CHECKED BY:  
**CL**

DRAWN BY:  
**TBW**

**8175-8176**

FIGURE NUMBER

WE CAN ASSUME NO RESPONSIBILITY FOR USE OF SUPERSEDED OR VOID DATA

DIMENSIONS ARE SUBJECT TO MANUFACTURERS TOLERANCE AND CHANGE WITHOUT NOTICE

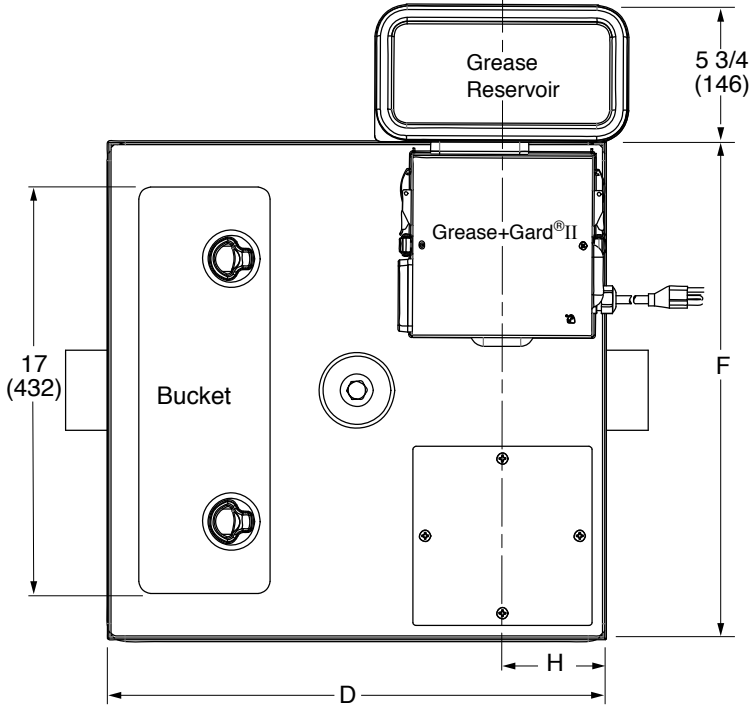
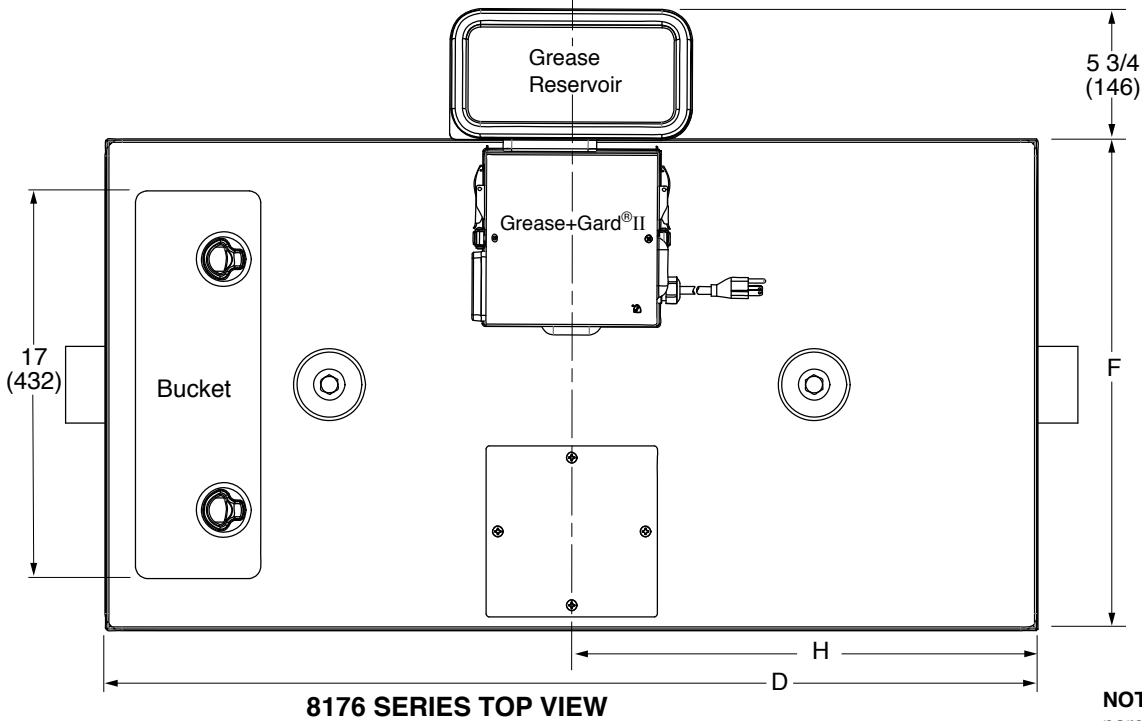


FIG. NO.	GPM FLOW RATE (L/M)	GREASE CAP LBS (KG)	D	F	H
8175-20	20(75)	40(15)	21(535)	21(535)	4 3/8(111)
8175-25	25(95)	50(19)	22 5/8(575)	22 1/2(572)	4 3/8(111)
8175-35	35(132)	70(26)	24 (610)	24 (610)	4 3/8(111)
8175-50	50(189)	100(37)	33 1/4(845)	24(610)	16 5/8(422)
LOW TYPE INTERCEPTOR					
8176-20	20(75)	40(15)	41(1040)	21 3/4(552)	20 1/2(520)
8176-35	35(132)	70(26)	53 3/4(1365)	27 1/2(699)	26 3/4(679)
8176-50	50(189)	100(37)	51 3/4(1315)	27 1/2(699)	25 3/4(654)



NOTE: Dimensions shown in parentheses are in millimeters.

REV.	DATE	DESCRIPTION	BY	CKD. BY

WEIGHT POUNDS	VOLUME CUBIC FEET

FIGURE NUMBER  
**8175-8176**  
**SERIES**