

T

SMITH® JAY R. SMITH MFG. CO.®
 MEMBER OF MORRIS GROUP INTERNATIONAL
 POST OFFICE BOX 3237
 MONTGOMERY, ALABAMA 36109-0237 (USA)
 TEL: 334-277-8520 FAX: 334-272-7396 www.jrsmith.com

ASPE **PDPT** **ASSE**
 MEMBER OF:

LOCATION

GREASE INTERCEPTORS

WITH RECEIVING CRADLE FOR RECESSED INSTALLATION WITH SEMI-AUTOMATIC DRAW-OFF

FUNCTION: The all steel receiving cradle provides nesting for the grease interceptor and vertical adjustability for the inlet/outlet connections.

WATERPROOFING: There are no provisions for waterproofing the cradle or interceptor. A drip pan (by others) is recommended for installations where units are installed suspended in an above grade floor structure above a ceiling.

STRUCTURAL SUPPORT: Whenever an interceptor is to be installed suspended in a floor slab with a cradle or independently, proper support is essential for safety and functional integrity of the installation. The structural support/support system shall be of sufficient strength and proper design for the purpose of supporting the unit when at full capacity and meet the approval of the architect and structural engineer. Jay R. Smith Mfg. Co. is not responsible for the design or recommendation of such supports/systems. Upon request, Jay R. Smith Mfg. Co. will provide the weight of the specific unit. Additional support must be added to compensate for the weight of the liquid/grease when in the flowing mode or static mode.

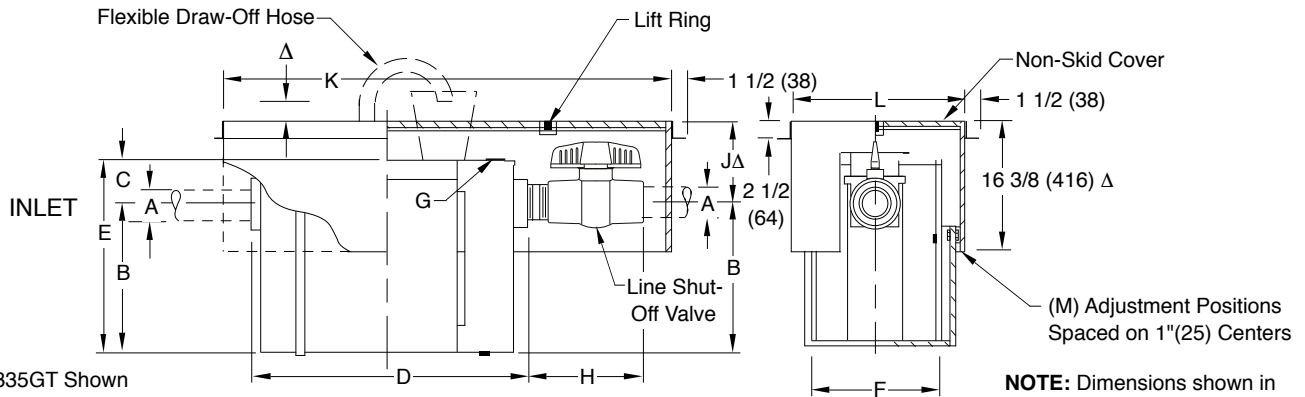


Fig. 8335GT Shown

NOTE: Dimensions shown in parentheses are in millimeters.

Fig No.	GPM Flow Rate	Grease Cap Lbs.	Inlet and Outlet Size A*	Dimensions						C.O Plug Size G	Line Shut-Off Valve H	Cradle Dimensions				
				Roughing Dimensions			Body					J Min.	J Max.	**K Length	L Width	M
				B	C	D	E	F	G							
8307GT	7	14	02 (50)	8 1/2 (215)	3 1/2 (89)	19 (485)	12 (305)	10 3/4 (275)	2 (51)	6 3/4 (175)	8 (205)	19 (485)	38 1/4 (970)	19 1/4 (490)	12 (305)	
8310GT	10	20	02 (50)	9 1/2 (240)	3 3/4 (95)	21 1/4 (540)	13 1/4 (335)	13 (330)	2 (51)	6 3/4 (175)	7 (180)	18 (455)	38 1/4 (970)	19 1/4 (490)	12 (305)	
8315GT	15	30	02 (50)	12 (305)	3 1/2 (89)	25 (635)	15 1/2 (395)	14 (355)	2 (51)	6 3/4 (175)	8 1/2 (215)	20 1/2 (520)	42 3/4 (1085)	22 3/4 (580)	13 (330)	
8320GT	20	40	03 (75)	13 (330)	4 (100)	28 1/2 (725)	17 (430)	15 3/4 (400)	2 (51)	10 (255)	7 1/2 (190)	19 1/2 (495)	42 3/4 (1085)	22 3/4 (580)	13 (330)	
8325GT	25	50	03 (75)	15 1/4 (390)	4 1/2 (115)	30 (760)	19 3/4 (500)	16 3/4 (425)	2 (51)	10 (255)	9 1/2 (240)	21 1/2 (545)	47 3/4 (1213)	25 3/4 (655)	13 (330)	
8335GT	35	70	03 (75)	16 (405)	5 (125)	32 1/2 (825)	21 (535)	18 1/4 (465)	2 (51)	10 (255)	8 3/4 (220)	20 3/4 (525)	47 3/4 (1213)	25 3/4 (655)	13 (330)	
8350GT	50	100	03 (75)	17 1/2 (445)	6 3/4 (170)	35 1/2 (900)	24 1/4 (615)	20 3/4 (525)	2 (51)	10 (255)	10 1/4 (260)	19 1/4 (490)	50 3/4 (1290)	28 1/4 (720)	13 (330)	
8375GT	75	150	04 (100)	21 1/2 (545)	15 1/2 (395)	50 (1270)	37 (940)	30 1/2 (775)	3 (76)	12 3/4 (325)	16 (405)	25 (635)	66 1/2 (1690)	38 1/4 (970)	13 (330)	

**Available with larger inlet and outlet when specified.

▲ When ARO or ARIO is specified, ARC must also be specified.

**NOTE: When specifying a larger Inlet & Outlet size, the "K" dimension must be increased.

REGULARLY FURNISHED:

Fab. Steel Interceptor and Receiving Cradle with Gray Duco Coating Inside and Outside with Steel Cone, Flexible Draw-off Hose and Cap, Line Shut-off Valve and Flow Control Fitting.

VARIATIONS:

- ΔCradle Cover Recessed for Terrazzo, Ceramic or Quarry Tile -QC
- ΔCradle Cover Recessed for Vinyl or Asphalt Tile -TC
- Fully Enclosed Cradle with Integral Drip Pan (See Fig. No. 8390)
- NO-HUB Adaptor (2) Req'd (Specify Fig. 2646Y)

OPTIONAL MATERIALS:

- Acid Resistant Coating Inside** -ARI
 - Acid Resistant Coating Outside** -ARO ▲
 - Acid Resistant Coating Inside and Outside** -ARIO ▲
 - Acid Resistant Coated Cradle -ARC
 - Aluminum Cover for Cradle -ACC
 - Aluminum Cover for Interceptor -AC
- **Interceptor Only

NOTE: When tile top is specified, add 1"(25). When Terrazzo top is specified add 1 1/4"(32).

NOTE: It is the responsibility of the installer to check all parts (internal and external) to verify they are in their proper operating order and location.

DRAWING NUMBER
S8300GT

SCALE:
NONE

DATE:
4-24-85

APPROVED BY:
KG

CHECKED BY:
VGD

DRAWN BY:
PJ

8300GT SERIES

DIMENSIONS ARE SUBJECT TO MANUFACTURERS TOLERANCE AND CHANGE WITHOUT NOTICE

REV.	DATE	DESCRIPTION	BY	CKD. BY	WEIGHT POUNDS	VOLUME CUBIC FEET	FIGURE NUMBER 8300GT SERIES
------	------	-------------	----	---------	---------------	-------------------	---------------------------------------