

R



JAY R. SMITH MFG. CO.
 MEMBER OF MORRIS GROUP INTERNATIONAL
 POST OFFICE BOX 3237
 MONTGOMERY, ALABAMA 36109-0237 (USA)
 TEL: 334-277-8520 FAX: 334-272-7396 www.jrsmith.com

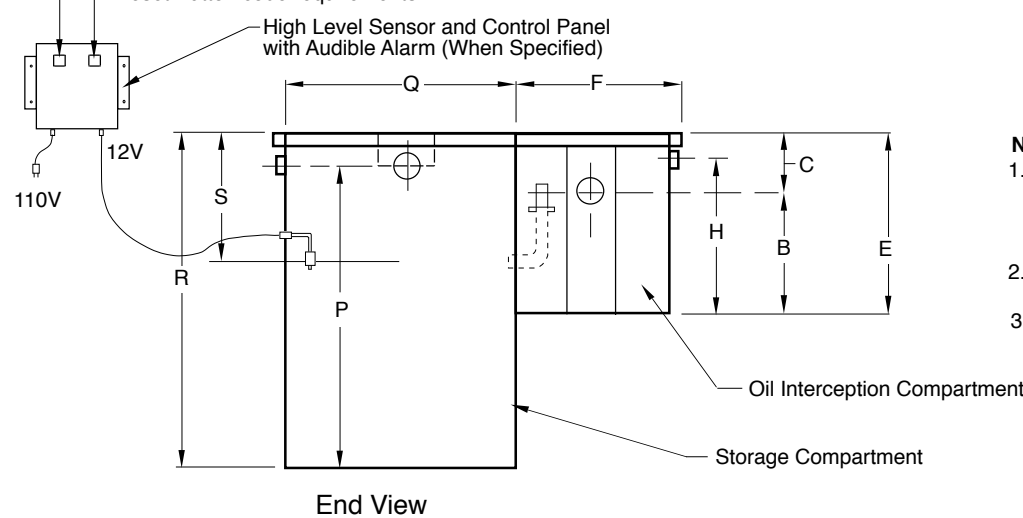
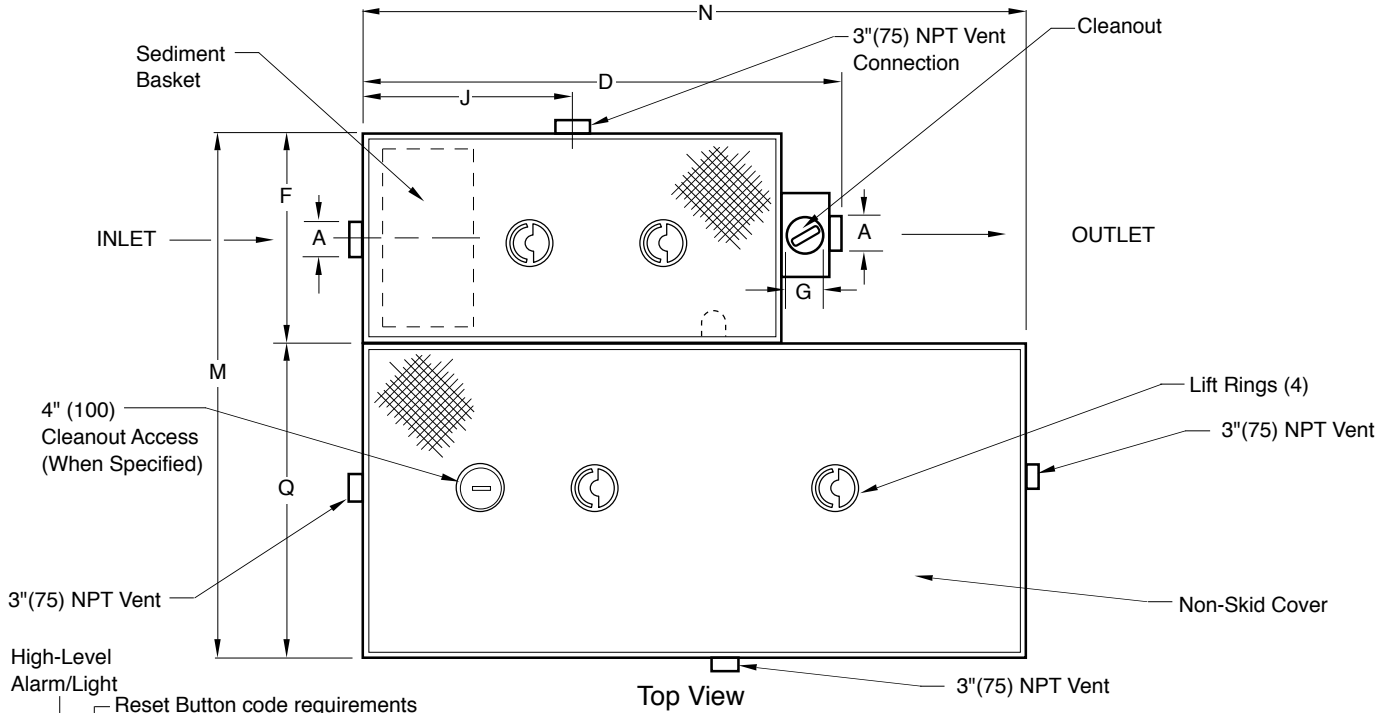


MEMBER OF:



LOCATION

OIL INTERCEPTOR WITH INTEGRAL STORAGE COMPARTMENT



NOTES:

1. When double wall containment is specified the overall dimensions change, consult the factory for the double wall containment dimensions.
2. Dimensions shown in parentheses are in millimeters.
3. Interceptor shall be vented on outlet side per local code requirements.

REGULARLY FURNISHED:

Fabricated Steel with Diamond Plate Cover, Sediment Basket, Duco Coated Inside and Coal Tar Epoxy Outside, Complete with Flow Control Fitting.

VARIATIONS:

- Traffic Rated Cover -H20
- Double Wall Containment - DWC (Note 1)
- 4"(100) Cleanout Access
- High Level Sensor and Control Panel -CBS
- Extension -E (Specify Height eg: -E12 for 12" ext.)

OPTIONAL MATERIALS:

- Coal Tar Epoxy Inside

REFER TO BACK OF SHEET FOR CAPACITIES AND DIMENSIONS

DRAWING NUMBER
S8599 Series

SIZE
A

SCALE:
NONE

DATE:
8-10-90

APPROVED BY:
TD

CHECKED BY:
TD

DRAWN BY:
TBW

8599 Series

WE CAN ASSUME NO RESPONSIBILITY FOR USE OF SUPERSEDED OR VOID DATA

DIMENSIONS ARE SUBJECT TO MANUFACTURERS TOLERANCE AND CHANGE WITHOUT NOTICE

R Q P	4-10-13 3-2-12 10-29-09	Rev. Variations Rev. Reg. Furn., Opt. Mat. Revised Regularly Furnished	TBW TBW RN	CL SJM TWK
REV.	DATE	DESCRIPTION	BY	CKD. BY

WEIGHT POUNDS	VOLUME CUBIC FEET
------------------	----------------------

FIGURE NUMBER
8599 Series



WARNING: Cancer and Reproductive Harm - www.P65Warnings.ca.gov

CAPACITIES AND DIMENSIONS

MODEL NUMBER	OIL INTERCEPTOR COMPARTMENT										STORAGE TANK COMPARTMENT									
	GPM	A*	B	C	D	E	F	G	H	J	Gals. Capacity	M	N	P	Q	R	S			
● 8599-10-5	10	02 (50)	9 1/2 (240)	3 3/4 (95)	21 1/4 (540)	13 1/4 (335)	13 (330)	2 (51)	9 3/4 (250)	9 1/2 (240)	5	24 (610)	21 1/4 (540)	10 1/4 (260)	11 (279)	13 1/4 (335)	9 1/4 (235)			
8599-10-50	10	02 (50)	9 1/2 (240)	3 3/4 (95)	21 1/4 (540)	13 1/4 (335)	13 (330)	2 (51)	9 3/4 (250)	9 1/2 (240)	50	25 (635)	30 (760)	50 3/4 (1290)	12 (305)	55 (1397)	9 1/4 (235)			
8599-15-50	15	02 (50)	12 (305)	3 1/2 (89)	25 (635)	15 1/2 (395)	14 (355)	2 (51)	12 (305)	10 1/4 (260)	50	26 (660)	30 (760)	50 3/4 (1290)	12 (305)	55 (1397)	9 3/4 (250)			
8599-20-50	20	03 (75)	13 (330)	4 (100)	28 1/2 (725)	17 (430)	13 (330)	2 (51)	13 1/2 (345)	12 (305)	50	27 3/4 (705)	30 (760)	50 3/4 (1290)	12 (305)	55 (1397)	12 1/2 (320)			
8599-25-100	25	03 (75)	15 1/4 (390)	4 1/2 (115)	30 (760)	19 3/4 (500)	16 3/4 (425)	2 (51)	16 1/4 (415)	12 3/4 (325)	100	31 3/4 (805)	50 3/4 (1290)	56 3/4 (1441)	15 (380)	61 (1550)	13 1/2 (345)			
8599-35-100	35	03 (75)	16 (405)	5 (125)	32 1/2 (825)	21 (535)	18 1/4 (465)	2 (51)	17 1/2 (445)	14 1/2 (370)	100	33 1/4 (845)	50 3/4 (1290)	56 3/4 (1441)	15 (380)	61 (1550)	14 (355)			
8599-50-100	50	03 (80)	17 1/2 (445)	6 3/4 (170)	35 1/2 (900)	24 1/4 (615)	20 3/4 (525)	2 (51)	20 3/4 (525)	16 (405)	100	36 1/4 (920)	50 3/4 (1290)	56 3/4 (1441)	15 (380)	61 (1550)	16 3/4 (425)			
8599-75-100	75	04 (100)	21 1/2 (545)	15 1/2 (395)	50 3/4 (1290)	37 (940)	30 1/2 (775)	3 (76)	32 3/4 (830)	21 (535)	100	45 1/2 (1155)	50 3/4 (1290)	56 3/4 (1441)	15 (380)	61 (1550)	24 (610)			
8599-100-250	100	04 (100)	27 (685)	16 1/2 (420)	54 3/4 (1390)	43 1/2 (1105)	33 1/2 (850)	3 (76)	39 1/4 (995)	23 (585)	250	58 1/2 (1485)	60 3/4 (1543)	60 3/4 (1543)	25 (635)	65 (1650)	25 (635)			
8599-150-250	150	05 (125)	33 (840)	17 1/2 (445)	60 3/4 (1543)	50 1/2 (1283)	38 1/2 (980)	4 (100)	46 1/4 (1175)	25 1/2 (650)	250	63 1/2 (1613)	60 3/4 (1543)	60 3/4 (1543)	25 (635)	65 (1650)	27 (685)			
8599-200-250	200	05 (125)	37 (940)	17 1/2 (445)	67 3/4 (1720)	54 1/2 (1385)	43 1/2 (1105)	4 (100)	50 1/4 (1275)	29 (735)	250	68 1/2 (1740)	60 3/4 (1543)	60 3/4 (1543)	25 (635)	65 (1650)	27 (685)			
8599-250-500	250	05 (125)	40 (1015)	18 (455)	73 3/4 (1875)	58 (1473)	47 1/2 (1205)	4 (100)	53 3/4 (1365)	32 (815)	500	79 1/2 (2019)	90 3/4 (2305)	71 3/4 (1822)	32 (815)	76 (1930)	27 1/2 (700)			
8599-300-500	300	05 (125)	43 1/2 (1105)	18 (455)	85 3/4 (2178)	61 1/2 (1582)	54 1/2 (1385)	4 (100)	57 1/4 (1454)	38 (965)	500	86 1/2 (2197)	90 3/4 (2305)	71 3/4 (1822)	32 (815)	76 (1930)	27 1/2 (700)			
8599-350-500	350	05 (125)	43 1/2 (1105)	18 (455)	85 3/4 (2178)	61 1/2 (1582)	54 1/2 (1385)	4 (100)	57 1/4 (1454)	38 (965)	500	86 1/2 (2197)	90 3/4 (2305)	71 3/4 (1822)	32 (815)	76 (1930)	27 1/2 (700)			
8599-400-500	400	06 (150)	43 1/2 (1105)	18 (455)	85 3/4 (2178)	61 1/2 (1582)	54 1/2 (1385)	4 (100)	57 1/4 (1454)	38 (965)	500	86 1/2 (2197)	90 3/4 (2305)	71 3/4 (1822)	32 (815)	76 (1930)	27 1/2 (700)			
8599-450-500	450	06 (150)	48 (1220)	18 (455)	103 1/4 (2635)	66 (1640)	64 1/2 (1640)	5 (125)	61 3/4 (1570)	46 (1170)	500	96 1/2 (2451)	90 3/4 (2305)	71 3/4 (1822)	32 (815)	76 (1930)	28 (710)			
8599-500-750	500	06 (150)	48 (1220)	18 (455)	103 1/4 (2635)	66 (1640)	64 1/2 (1640)	5 (125)	61 3/4 (1570)	46 (1170)	750	99 1/2 (2524)	103 1/4 (2635)	83 3/4 (2127)	35 (890)	88 (2235)	28 (710)			

NOTE: Any unit exceeding 92"(2337mm) in width, 96"(2438mm) in height or weighing more than 3,500 lbs.(1,588 KG.) is an over sized and/or over weight product requiring special shipping and handling considerations. Contact Smith Customer Service as standard FFA terms do not apply.

NOTE: Model number is defined as: 8599-10-50
 Series number Size of storage tank compartment in gallons.
 GPM flow rate for oil interceptor.

* Larger Inlet and Outlet Size Available Specify Required Size.

● Recommended for Elevator Pits.

NOTE: Dimensions shown in parentheses are in millimeters.

REV.	DATE	DESCRIPTION	BY	CKD. BY	WEIGHT POUNDS	VOLUME CUBIC FEET	FIGURE NUMBER
	10-10-19	Revised Dimension					8599 SERIES BS
	2-17-16	Added Note					
	3-1-12	Rev. Table					
	05/25/07	Added 8599-10-5 to chart					